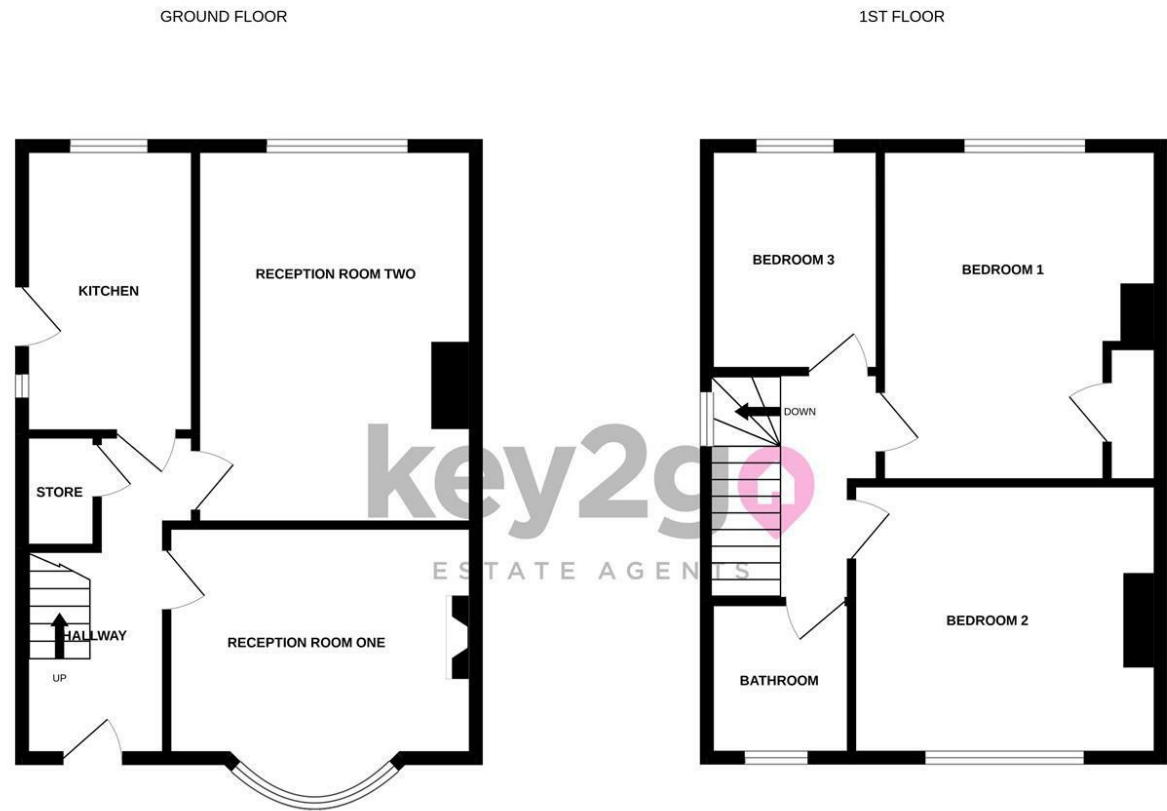


Floorplan

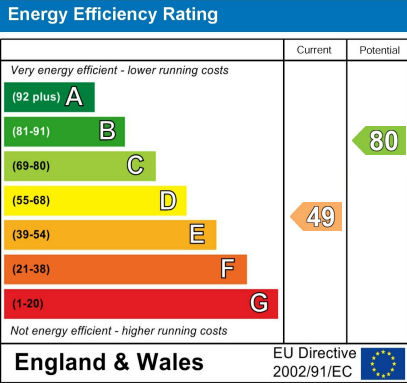


Whilst every attempt has been made to ensure the accuracy of the floorplan contained here, measurements of doors, windows, rooms and any other items are approximate and no responsibility is taken for any error, omission or mis-statement. This plan is for illustrative purposes only and should be used as such by any prospective purchaser. The services, systems and appliances shown have not been tested and no guarantee as to their operability or efficiency can be given.
Made with Metropix ©2022

Area Map



Energy Efficiency Graph



Viewing

Please contact our Lettings Team Office on 0114 2478819 if you wish to arrange a viewing appointment for this property or require further information.

These particulars, whilst believed to be accurate are set out as a general outline only for guidance and do not constitute any part of an offer or contract. Intending purchasers should not rely on them as statements of representation of fact, but must satisfy themselves by inspection or otherwise as to their accuracy. No person in this firms employment has the authority to make or give any representation or warranty in respect of the property.



84 Idsworth Road
Sheffield, S5 6UP

£750 PCM



84 Idsworth Road

Sheffield, S5 6UP

£750 PCM



A unique opportunity to rent this deceptively spacious, three bedroomed detached home located in a sought after area! Having two reception rooms, off road parking and an enclosed rear garden! On the doorstep to Sheffield Hospitals and a wide range of local amenities!

Situated in Sheffield, which has become a very popular place to live due to its close proximity to a range of local amenities, great road links and Sheffield main high street, which boasts a variety of shopping, fine cuisine and ideal train links.

The property itself has been truly loved and cared for; it could easily be transformed into a warm and welcoming home benefiting from neutral decor.

